



# NEUROSCIENCE

## Antibodies

**Elabscience<sup>®</sup>**

Focus On Lab Research Service For Life Science

# About Elabscience

---

Elabscience specializes in immunodiagnostic technology for the life science community. We have complete R&D and manufacture platform and have good quality control for every kit. We endeavor to reduce lot to lot variation to keep your experiment results more consistent and precise. Through unremitting efforts and development, our customers have spread in more than 100 countries and districts all over the world.

Elabscience's major products are Proteins, Antibodies, ELISA kits, CLIA Kits, labeling kits and related reagents. Elabscience also provides custom services for our customers including protein expression and purification service, antibody customized service, ELISA customized service, cell biology service, molecular biology service, and whole research project solutions.





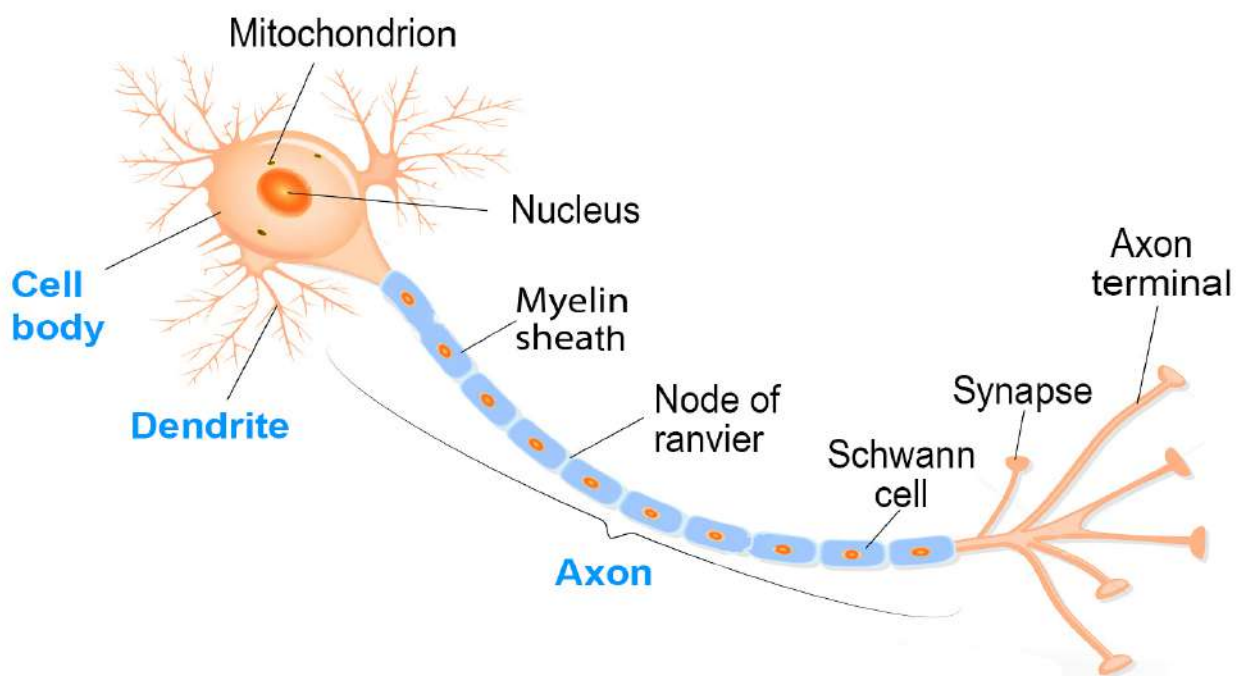
# Product introduction

## Neuroscience

Neuroscience is the scientific study of the nervous system. The scope of neuroscience has broadened to include different approaches used to study the molecular, cellular, developmental, structural, functional, evolutionary, computational, and medical aspects of the nervous system. The techniques used by neuroscientists have also expanded enormously, from molecular and cellular studies of individual nerve cells to imaging of sensory and motor tasks in the brain. Recent theoretical advances in neuroscience have also been aided by the study of neural networks.

The H brain remains a great mystery in science and current research strives to understand molecular and cellular processes of the nervous system. Prevention and effective treatment of neurological disorders has been a major medical challenge.

## Neuron





# Product details

## Neuroscience



Cat. No.	Product Name	Swissprot	Reactivity	Application
ENP0586	Phospho-Synaptotagmin 1/2 (S309/306) Polyclonal Antibody	P21579/Q8N910	H M R	WB IHC ELISA
ENP0587	Phospho-Synaptotagmin 1/2 (T202/199) Polyclonal Antibody	P21579/Q8N910	H M R	WB IHC ELISA
ENT4484	Synaptotagmin Polyclonal Antibody	P21579/Q8N910	H M R	WB IHC ELISA
EPM12500	Synaptophysin Monoclonal Antibody	P21579/Q8N910	H M R	ELISA WB IF
EAP0984	CASK Polyclonal Antibody	O14936	H M R	WB IHC IF
ESAP16573	CALCA Polyclonal Antibody	P01258	H	ELISA IHC
ENP1098	Phospho-IP3R-I (S1764) Polyclonal Antibodyw	Q14643	H M R	IHC ELISA
ESAP16893	ITPR1 Polyclonal Antibody	Q14643	H M R	ELISA IHC
EPM12406	Oligophrenin 1 Monoclonal Antibody	O60890	H	ELISA WB
ENT0273	ApoE Polyclonal Antibody	P02649	H M R	WB IHC ELISA
ESAP13639	LZTS1 Polyclonal Antibody	Q9Y250	H M R	ELISA IHC



# Neuroscience

Cat. No.	Product Name	Swissprot	Reactivity	Application
EAP1053	PRNP Polyclonal Antibody	P04156	H M R	WB
EAP0624	BIN1 Polyclonal Antibody	O00499	H M R	WB IHC IF
ENK5352	Amphiphysin II Polyclonal Antibody	O00499	H M R	WB ELISA
ESAP10305	BIN1 Polyclonal Antibody	O00499	H	ELISA WB
ESAP14206	BIN1 Polyclonal Antibody	O00499	H	ELISA IHC
ESAP16435	SSTR1 Polyclonal Antibody	P30872	H M R	ELISA WB IHC
ESAP10432	EGR1 Polyclonal Antibody	P18146	H M R	ELISA WB
ENT1498	Egr-2 Polyclonal Antibody	P18146/P11161	H M R	WB IHC IF ELISA
ENT2970	Na+ CP-pan Polyclonal Antibody	P35498/Q99250/ Q9NY46/P35499/ Q14524/Q9UQD0/ Q15858/Q9Y5Y9/Q9UI33	H M R	WB IHC IF ELISA
ESAP13102	SCN5A Polyclonal Antibody	Q14524	H M R	ELISA IHC
ENT4283	Shank 2 Polyclonal Antibody	Q9UPX8	H	WB ELISA
EAP4123	SLC9A3R1 Polyclonal Antibody	O14745	H M R	WB
ENT1448	EAAT1 Polyclonal Antibody	P43003	H	WB ELISA
ESAP16192	SLC1A4 Polyclonal Antibody	P43007	H M	ELISA WB IHC
ENT1922	GluR-1 Polyclonal Antibody	P42261	H M R Mk	WB IHC IF ELISA
ESAP12176	GRIA1 (phospho-Ser849) Polyclonal Antibody	P42261	H M R	WB
ENP0257	Phospho-Synapsin I (S9) Polyclonal Antibody	P17600	H M R	WB IHC IF ELISA
ENT4483	Synapsin I Polyclonal Antibody	P17600	H M R	WB IHC IF ELISA
ESAP12178	SYN1 (Phospho-Ser9) Polyclonal Antibody	P17600	H M R	WB IF
ESAP16880	SYN1 Polyclonal Antibody	P17600	H	ELISA WB IHC
ENT1924	GluR4 Polyclonal Antibody	P48058	H M R	WB IHC ELISA
ENT4500	SYP Polyclonal Antibody	P08247	H M R	WB IHC ELISA
ENP0696	Phospho-NMDA $\zeta$ 1 (S896) Polyclonal Antibody	Q05586	H M R	WB IHC ELISA
ENT3156	NMDA $\zeta$ 1 Polyclonal Antibody	Q05586	H M R	WB IHC ELISA



## Neuroscience

Cat. No.	Product Name	Swissprot	Reactivity	Application
ENT1923	GluR-2 Polyclonal Antibody	P42262	H M R	WB IHC IF ELISA
ESAP12191	GRIA2 (phospho-Ser880) Polyclonal Antibody	P42262	H M R	WB
ESAP16148	GRIA2 Polyclonal Antibody	P42262	H M R	ELISA IHC
ESAP13580	SYN2 Polyclonal Antibody	Q92777	H M R	ELISA WB IHC
EAP0294	GRIA3 Polyclonal Antibody	P42263	H M R	WB IHC IF
EAP3105	GRIN2A Polyclonal Antibody	Q12879	M R	WB
ENP0809	Phospho-NMDAε2 (Y1336) Polyclonal Antibody	Q13224	H M R	WB IHC ELISA
ESAP16145	GRIN2B Polyclonal Antibody	Q13224	H M R	ELISA WB
EAP0318	TARDBP Polyclonal Antibody	Q13148	H M R	WB IHC IF
EPM12435	phospho(403/404)-TDP43 Monoclonal Antibody	Q13148	H	ELISA WB
EPM12503	TDP-43 (H specific) Monoclonal Antibody	Q13148	H	ELISA WB IHC
EAP1146	GRM1 Polyclonal Antibody	Q13255	H M R	WB IHC
ESAP10576	MAG Polyclonal Antibody	P20916	H M R	ELISA WB IHC
ESAP16411	SCN11A Polyclonal Antibody	Q9UI33	H M R	ELISA IHC
ESAP13104	SCN10A Polyclonal Antibody	Q9Y5Y9	H	ELISA IHC
EAP0040	GFAP Polyclonal Antibody	P14136	H M R	WB IHC IF
EPM12299	GFAP Monoclonal Antibody	P14136	H M R	ELISA WB IHC
ESAP16406	SCN1A/2A/3A/4A/5A/8A/9A/10A/11A/13A Polyclonal Antibody	P35498	H R	ELISA IHC
ENT2967	Na <sup>+</sup> CP type IXα Polyclonal Antibody	Q15858	H M R	WB IHC ELISA
ESAP13103	SCN9A Polyclonal Antibody	Q15858	H	ELISA IHC
EAP0017	BMI1 Polyclonal Antibody	P35226	H M R	WB IHC IF
EPM12557	BMI1 Monoclonal Antibody	P35226	H M	ELISA WB IHC IF
EAP0150	PARK2 Polyclonal Antibody	O60260	H M R	WB IHC IF
ESAP16190	SLC9A3R2 Polyclonal Antibody	Q15599	H M R	ELISA IHC
EAP0169	PARK7 Polyclonal Antibody	Q99497	H M R	WB IHC ICC IF



# Neuroscience

Cat. No.	Product Name	Swissprot	Reactivity	Application
ENT1354	DJ-1 Polyclonal Antibody	Q99497	H M R	WB IHC ELISA
ENT3592	PARK7 Polyclonal Antibody	Q99497	H M	WB IHC IF ELISA
EAP1549	SH3GL2 Polyclonal Antibody	Q99962	H M R	WB
ENT1449	EAAT3 Polyclonal Antibody	P43005	H M R	WB ELISA
ESAP13502	FXR1 Polyclonal Antibody	P51114	H M R	ELISA WB IHC
ENM0064	Ki 67 Monoclonal Antibody	P46013	H M R	IHC
ENT2467	Ki-67 Polyclonal Antibody	P46013	H	IHC IF ELISA
ENT0305	ARALAR Polyclonal Antibody	O75746	H	WB IHC ELISA
EAP3265	ARALAR Polyclonal Antibody	P43004	H M R	WB
ESAP15078	ATXN1 Polyclonal Antibody	P54253	H M R	ELISA WB IHC
EAP3467	BACE1 Polyclonal Antibody	P56817	H M R	WB
EAP3256	SCN2B Polyclonal Antibody	O60939	H M R	WB
ENT2965	Na <sup>+</sup> CP type II $\beta$ Polyclonal Antibody	O60939	H M R	WB ELISA
ESAP16407	SCN2A Polyclonal Antibody	Q99250	H R	ELISA IHC
ESAP17155	SCN1B Polyclonal Antibody	Q07699	H M R	ELISA IHC
ENT3747	PKA I $\beta$ reg Polyclonal Antibody	P31321	H M R	WB IHC ELISA
ESAP13079	PRKAR1B Polyclonal Antibody	P31321	H M R	ELISA WB IHC
ENP0164	Phospho-MEF-2 (T319) Polyclonal Antibody	Q02078	H M R	WB IHC ELISA
ENP0860	Phospho-MEF-2 (S408) Polyclonal Antibody	Q02078	H M R	WB IHC IF ELISA
ENT2698	MEF-2 Polyclonal Antibody	Q02078	H M R	WB IHC ELISA
ESAP12737	PAFAH1B1 Polyclonal Antibody	P43034	H M R	ELISA IHC
ESAP15654	RNF7 Polyclonal Antibody	Q9UBF6	H M	ELISA WB IHC
EAP0116	S100B Polyclonal Antibody	P04271	M R	WB
EGM0340	S100 beta Polyclonal Antibody	P04271	H R M	IHC
EAP0142	PRKAR1A Polyclonal Antibody	P10644	H M R	WB IHC IF



# Neuroscience

Cat. No.	Product Name	Swissprot	Reactivity	Application
ENT3746	PKA Ia reg Polyclonal Antibody	P10644	H M R	WB IHC IF ELISA
ENT5579	CD13 Polyclonal Antibody	P15144	H	WB ELISA
EPM12186	CD13 Monoclonal Antibody	P15144	H	ELISA WB IHC
ESAP13002	ANPEP Polyclonal Antibody	P15144	H M R	ELISA IHC
ENT2024	GPR50 Polyclonal Antibody	Q13585	H	WB IF ELISA
EAP0541	MBP Polyclonal Antibody	P02686	H M R	WB IHC IF
ENT1073	Cox-2 Polyclonal Antibody	P35354	H	WB IHC IF ELISA
ENT1435	Dyrk1A Polyclonal Antibody	Q13627	H M R	WB IHC IF ELISA
ENT4056	Ret Polyclonal Antibody	P07949	H M R	WB IHC IF ELISA
ESAP15724	STXBP1 Polyclonal Antibody	P61764	H M R	ELISA WB IHC
EAP2199	PINK1 Polyclonal Antibody	Q9BXM7	H	WB IHC IF
ENK041	Acetyl-BMAL1 (K538) Polyclonal Antibody	O00327	H M R	WB ELISA
ESAP11170	ARNTL Polyclonal Antibody	O00327	H M R	ELISA WB
ESAP14320	EGR3 Polyclonal Antibody	Q06889	H M R	ELISA WB
ESAP13220	TFAP2B Polyclonal Antibody	Q92481	H M	ELISA WB
EAP3372	FXR2 Polyclonal Antibody	P51116	H M R	WB
ENT0253	AP-2 $\alpha/\beta$ Polyclonal Antibody	P05549/Q92481	H M R	WB IHC ELISA
EAP4071	BSND Polyclonal Antibody	Q8WZ55	H M R	WB IHC
ESAP13139	SV2A Polyclonal Antibody	Q7L0J3	H M R	ELISA IHC
ENT2731	Mena Polyclonal Antibody	Q8N8S7	H M R	WB IHC ELISA
ENT5548	Tenascin-C Polyclonal Antibody	P24821	H M R	WB ELISA
ESAP12891	TNC Polyclonal Antibody	P24821	H M	ELISA IHC
ESAP17057	PCSK9 Polyclonal Antibody	Q8NBP7	H	ELISA WB
ESAP10754	SOD1 Polyclonal Antibody	P00441	H M R	ELISA WB
ESAP15388	GSTP1 Polyclonal Antibody	P09211	H M R	ELISA WB IHC





# Neuroscience

Cat. No.	Product Name	Swissprot	Reactivity	Application
EAP0168	SNAP25 Polyclonal Antibody	P60880	H M R	WB IHC ICC IF
EPM12489	SNAP25 Monoclonal Antibody	P60880	H M R	ELISA IF WB
EAP3867	GNB3 Polyclonal Antibody	P16520	H M R	WB
ESAP10461	GNA11 Polyclonal Antibody	P29992	H M R	ELISA WB IHC
EAP1299	CAMK4 Polyclonal Antibody	Q16566	H M R	WB IHC IF
ENP0083	Phospho-DARPP-32 (T75) Polyclonal Antibody	Q9UD71	H M R Mk	WB IHC ELISA
ENP0950	Phospho-DARPP-32 (T34) Polyclonal Antibody	Q9UD71	H M R	WB IHC IF ELISA
ENT1290	DARPP-32 Polyclonal Antibody	Q9UD71	H M R Mk	WB IHC ELISA
ESAP17311	TREM2 Polyclonal Antibody	Q9NZC2	H M	ELISA WB
EAP1279	Map2 Polyclonal Antibody	P11137	H M	WB IHC
ESAP10515	TRAP1 Polyclonal Antibody	Q12931	H M R	ELISA WB IHC
ENT3491	p140Cap Polyclonal Antibody	Q9C0H9	H M R	WB ELISA
ENP0279	Phospho-CaMKII $\alpha/\beta/\delta$ (T305) Polyclonal Antibody	Q9UQM7/Q13554/Q13557	H M R	WB IHC ELISA
ENP0042	Phospho-CaMKII $\alpha/\delta$ (T286) Polyclonal Antibody	Q9UQM7/Q13557	H M R	WB IHC IF ELISA
ENT0623	CaMKII $\alpha/\delta$ Polyclonal Antibody	Q9UQM7/Q13557	H M R	WB IHC IF ELISA
EAP0307	CAPN1 Polyclonal Antibody	P07384	H M R	WB IHC
EAP2459	CAMK1D Polyclonal Antibody	Q8IU85	H M R	WB IHC IF
EAP0060	NEFL Polyclonal Antibody	P07196	H M R	WB IHC IF
EPM12395	NF-L Monoclonal Antibody	P07196	H M R	ELISA WB
ESAP17004	NEFM Polyclonal Antibody	P07197	H M R	ELISA WB IHC
ESAP13223	APBA2 Polyclonal Antibody	Q99767	H	ELISA IHC
EAP0153	GAD2 Polyclonal Antibody	Q05329	H M R	WB IHC IF
ENT3114	NGF Polyclonal Antibody	P01138	H M R	WB IHC ELISA
ESAP13041	NEUROG2 Polyclonal Antibody	Q9H2A3	H	ELISA IHC
EAP3228	PSEN2 Polyclonal Antibody	P49810	H R	WB IHC



## Neuroscience

Cat. No.	Product Name	Swissprot	Reactivity	Application
ESAP16351	NGFR Polyclonal Antibody	P08138	H M R	ELISA WB IHC
ENT3080	NF2 Polyclonal Antibody	P35240	H M R	WB IHC IF ELISA
ESAP16142	NFASC Polyclonal Antibody	O94856	H M R	ELISA WB IHC
EAP3180	NEFH Polyclonal Antibody	P12036	M	WB
EPM12394	NF200 Monoclonal Antibody	P12036	H Pig	ELISA WB IF IHC
ESAP17003	NEFH Polyclonal Antibody	P12036	H	ELISA IHC
ESAP16343	NDRG1 Polyclonal Antibody	Q92597	H M R	ELISA WB IHC
EAP0989	CAMK2B Polyclonal Antibody	Q13554	H M R	WB
ENP0781	Phospho-CaMKII $\beta$ / $\gamma$ / $\delta$ (T287) Polyclonal Antibody	Q13554/Q13555/ Q13557	H M R	WB IHC ELISA
ENT5063	CaMKII $\delta$ Polyclonal Antibody	Q13557	H M R	WB ELISA
EAP3443	PSIP1 Polyclonal Antibody	O75475	H M R	WB
ENT1828	GABAB R1 Polyclonal Antibody	Q9UBS5	H M R Mk	WB IHC ELISA
ESAP11609	NCSTN Polyclonal Antibody	Q92542	H M R	ELISA WB IHC
ENT5095	TRPV3 Polyclonal Antibody	Q8NET8	H M	WB ELISA
ESAP14014	TRPV3 Polyclonal Antibody	Q8NET8	H M	ELISA IHC
EAP2731	NCS1 Polyclonal Antibody	P62166	H M R	WB IHC IF
ESAP11615	NCF2 Polyclonal Antibody	P19878	H M	ELISA WB IHC
EPM12712	NCAM1/CD56 Monoclonal Antibody	P13591	H M	ELISA WB IHC
ESAP13379	NCAM1 Polyclonal Antibody	P13591	H M R	ELISA WB IHC
ESAP15352	GAB2 Polyclonal Antibody	Q9UQC2	H M R	ELISA WB IHC
ENT4493	Syntaxin 1 Polyclonal Antibody	Q16623	H M R Mk	WB IHC IF ELISA
ESAP16444	STX1A Polyclonal Antibody	Q16623	H M R	ELISA WB IHC
EAP0705	TFAM Polyclonal Antibody	Q00059	H M	WB IHC IF
ENP0588	Phospho-TH (S62) Polyclonal Antibody	P07101	H M R Mk	WB IHC ELISA
ENP0589	Phospho-TH (S71) Polyclonal Antibody	P07101	H M R	WB IHC ELISA



# Neuroscience

Cat. No.	Product Name	Swissprot	Reactivity	Application
ENP0863	Phospho-TH (S19) Polyclonal Antibody	P07101	H M R	WB IHC IF ELISA
ENT4638	TH Polyclonal Antibody	P07101	H M R	WB IHC IF ELISA
ESAP12144	TH (Phospho-Ser31) Polyclonal Antibody	P07101	H R	WB
ESAP12145	TH(Phospho-Ser40) Polyclonal Antibody	P07101	H M R	IF
EAP1976	TMED10 Polyclonal Antibody	P49755	H M R	WB IHC
ESAP14898	ARFGAP1 Polyclonal Antibody	Q8N6T3	H M	ELISA WB IHC
ENT0535	BRSK1 Polyclonal Antibody	Q8TDC3	H M	WB IF ELISA
ESAP17084	PLXNA1 Polyclonal Antibody	Q9UIW2	H M	ELISA IHC
ESAP10486	CALR Polyclonal Antibody	P27797	H M R	ELISA WB IHC
EAP3028	CAPN2 Polyclonal Antibody	P17655	H M R	WB
EAP3163	MYCN Polyclonal Antibody	P04198	H M R	WB
ESAP13713	MYCN Polyclonal Antibody	P04198	H M R	ELISA IHC
ESAP17086	PLXNA4 Polyclonal Antibody	Q9HCM2	H M	ELISA IHC
ESAP11186	CAST Polyclonal Antibody	P20810	H	ELISA WB IHC
ENT4403	SR-4 Polyclonal Antibody	Q13639	H M R	WB IHC IF ELISA
ESAP15750	HTR1A Polyclonal Antibody	P08908	H M R	ELISA WB IHC
EAP0809	TOR1A Polyclonal Antibody	O14656	H M R	WB IHC
ENP0501	Phospho-TPH2 (S19) Polyclonal Antibody	Q8IWU9	H M R	WB ELISA
ESAP17301	TPH2 Polyclonal Antibody	Q8IWU9	H M R	ELISA WB IHC
EAP0414	CA2 Polyclonal Antibody	P00918	H M R	WB
ESAP15399	HOMER1 Polyclonal Antibody	Q86YM7	H M R	ELISA WB IHC
ENP0912	Phospho-Calmodulin (T80/S82) Polyclonal Antibody	P62158	H M R	WB IHC IF ELISA
ENT0612	Calmodulin Polyclonal Antibody	P62158	H M R	WB IHC IF ELISA
ENP0122	Phospho-GSK3 $\alpha$ (S21) Polyclonal Antibody	P49840	H M R	WB IHC IP ELISA
ENT2080	GSK3 $\alpha$ Polyclonal Antibody	P49840	H M R	WB IHC IP ELISA



# Neuroscience

Cat. No.	Product Name	Swissprot	Reactivity	Application
ENP0123	Phospho-GSK3 $\alpha$ / $\beta$ (Y279/216) Polyclonal Antibody	P49840/P49841	H M R	WB IHC ELISA
ENT2081	GSK3 $\alpha$ / $\beta$ Polyclonal Antibody	P49840/P49841	H M R	WB IHC ELISA
ENT3628	PDE4B/C/D Polyclonal Antibody	Q07343/Q08493/ Q08499	H M R	WB IHC ELISA
ESAP11184	CALB1 Polyclonal Antibody	P05937	H M R	ELISA WB IHC
ENT0624	CaMKII $\beta$ Polyclonal Antibody	Q96RR4	H M R	WB IHC ELISA
ESAP17085	PLXNA2 Polyclonal Antibody	O75051	H M	ELISA IHC
ENT1586	EphB2 Polyclonal Antibody	P29323	H	WB IHC ELISA
EAP0863	THY1 Polyclonal Antibody	P04216	H	WB
ESAP16458	THY1 Polyclonal Antibody	P04216	H M R	ELISA IHC
EAP1979	TOMM20 Polyclonal Antibody	Q15388	H M R	WB IHC IF
ESAP14462	LRRK2 Polyclonal Antibody	Q5S007	H	ELISA IHC
ESAP16596	SLC6A4 Polyclonal Antibody	P31645	H M R	ELISA IHC
ENP0747	Phospho-TPH1 (S58) Polyclonal Antibody	P17752	H M R	WB IHC ELISA
ENT4709	TPH1 Polyclonal Antibody	P17752	H M R	WB IHC IF ELISA
EAP1825	CIRBP Polyclonal Antibody	Q14011	H M R	WB IHC IF
ENT3510	p35 Polyclonal Antibody	Q15078	H M R	WB IHC IF ELISA
EAP0991	GNAO1 Polyclonal Antibody	P09471	H M R	WB
ENT4087	Rhodopsin Polyclonal Antibody	P08100	H M R	WB IHC ELISA
ESAP10829	VHL Polyclonal Antibody	P40337	H	ELISA IHC
EAP3286	ADAM17 Polyclonal Antibody	P78536	H R	WB
ESAP10895	ADAM17 Polyclonal Antibody	P78536	H M R	ELISA IHC
ENT5320	NUMB Polyclonal Antibody	P49757	H M R	WB ELISA
EPM12403	NUMB Monoclonal Antibody	P49757	H M	ELISA WB IF
ENT0359	AR- $\beta$ 1 Polyclonal Antibody	P08588	H M R	WB IHC IF ELISA
ENT0362	AR- $\beta$ 2 Polyclonal Antibody	P07550	H M R	WB IHC IF ELISA





# Neuroscience

Cat. No.	Product Name	Swissprot	Reactivity	Application
ENT5048	AR-β2 Polyclonal Antibody	P07550	H M R	WB ELISA
ENM0066	NSE Monoclonal Antibody	P09104	H M R	WB IHC
EPM12401	NSE Monoclonal Antibody	P09104	H M R	ELISA WB IHC IF
ESAP12514	PTGS1 Polyclonal Antibody	P23219	H	ELISA IHC
ENT1067	Cox-1 Polyclonal Antibody	P23219	H	WB IHC ELISA
EAP2331	PTGS1 Polyclonal Antibody	P23219	H M R	WB IHC
EAP0229	AMBRA1 Polyclonal Antibody	Q9C0C7	H	WB
ESAP10949	AMBRA1 Polyclonal Antibody	Q9C0C7	H M	ELISA IHC
ESAP14339	FABP7 Polyclonal Antibody	O15540	H M R	ELISA WB IHC
ESAP16356	RTN4 Polyclonal Antibody	Q9NQC3	H M R	ELISA WB IHC
EAP0145	NeuN Polyclonal Antibody	A6NFN3	H M R	WB IHC IF
ESAP16140	RBFOX3 Polyclonal Antibody	A6NFN3	H M	ELISA IHC
ESAP13511	GPHN Polyclonal Antibody	Q03555	H M R	ELISA IHC
EAP1505	FMR1 Polyclonal Antibody	Q06787	H M R	WB IHC IF
EAP0569	WFS1 Polyclonal Antibody	O76024	H M R	WB
ENP0722	Phospho-PTP1B (S50) Polyclonal Antibody	P18031	H M R Mk	WB IHC ELISA
ENT3900	PTP1B Polyclonal Antibody	P18031	H M R Mk	WB IHC ELISA
ESAP11676	PTPN5 Polyclonal Antibody	P54829	H M R	ELISA IHC
ESAP16028	HCN2 Polyclonal Antibody	Q9UL51	H M R	ELISA IHC
ENT1738	Fos B Polyclonal Antibody	P53539	H M Mk	WB IHC IF ELISA
ESAP11701	RGS4 Polyclonal Antibody	P49798	H M R	ELISA IHC
ESAP14899	ARC Polyclonal Antibody	Q7LC44	H M	ELISA WB IHC
EAP3215	PRKACA Polyclonal Antibody	P17612	H M	WB
ENT3748	PKAα/β cat Polyclonal Antibody	P17612/P22694	H M R	WB IHC IF ELISA
ENT3749	PKAα/β/γ cat Polyclonal Antibody	P17612/P22694/ P22612	H M R	WB IHC IF ELISA



# Neuroscience

Cat. No.	Product Name	Swissprot	Reactivity	Application
ENP0260	Phospho-Tau (S235) Polyclonal Antibody	P10636	H M R	WB ELISA
ENP0262	Phospho-Tau (S356) Polyclonal Antibody	P10636	H M R	WB IHC ELISA
ENP0263	Phospho-Tau (S396) Polyclonal Antibody	P10636	H M R	WB ELISA
ENP0264	Phospho-Tau (S404) Polyclonal Antibody	P10636	H M R	WB ELISA
ENP0265	Phospho-Tau (T181) Polyclonal Antibody	P10636	H	WB ELISA
ENT4546	Tau Polyclonal Antibody	P10636	H M R	WB IHC IF ELISA
ESAP12102	MAPT (Phospho-Thr205) Polyclonal Antibody	P10636	H M R	WB IHC
ESAP12103	MAPT (Phospho-Ser214) Polyclonal Antibody	P10636	H M R	WB
ESAP16334	ANO1 Polyclonal Antibody	Q5XXA6	H M	ELISA WB IHC
EAP1909	P2RX4 Polyclonal Antibody	Q99571	H	WB IHC IF
ENT2651	MARK2 Polyclonal Antibody	Q7KZ17	H M R Mk	WB IF ELISA
EAP0382	VAMP2 Polyclonal Antibody	P63027	H M R	WB
ESAP12175	SNCA (Phospho-Tyr125) Polyclonal Antibody	P37840	H	WB IF
ESAP12188	SNCA (Phospho-Tyr136) Polyclonal Antibody	P37840	H M R	WB IF
ENT4497	Synuclein- $\alpha$ Polyclonal Antibody	P37840	H M R	WB IHC IF ELISA
ENP0953	Phospho-MOR-1 (S375) Polyclonal Antibody	P35372	H M R	WB IHC ELISA
ENT2816	MOR-1 Polyclonal Antibody	P35372	H M R	WB IHC ELISA
EAP0352	STIP1 Polyclonal Antibody	P31948	H M R	WB IHC IF
EAP2407	VAMP3 Polyclonal Antibody	Q15836	H M R	WB
ESAP14327	MAPK7 Polyclonal Antibody	Q13164	H M R	ELISA WB IHC
EGM0344	beta Amyloid Polyclonal Antibody	P05067	H R	WB IHC
ENP0855	Phospho-Amyloid- $\beta$ (T743) Polyclonal Antibody	P05067	H M R	WB IHC IF ELISA
ENT0226	Amyloid- $\beta$ Polyclonal Antibody	P05067	H M R	WB IHC IF ELISA
EPM12144	Amyloid beta (A4) precursor protein Monoclonal Antibody	P05067	H Pig	ELISA WB IHC
ESAP12134	APP (Phospho-668) Polyclonal Antibody	P05067	H M R	WB



# Neuroscience

Cat. No.	Product Name	Swissprot	Reactivity	Application
EAP1715	Phospho-APP-T743 Polyclonal Antibody	P05067	H M R	WB
ESAP10194	APP Polyclonal Antibody	P05067	H	ELISA IHC
ENT4498	Synuclein- $\beta$ Polyclonal Antibody	Q16143	H M R	WB IHC IF ELISA
ENT4850	VAMP-1/2/3 Polyclonal Antibody	P23763/P63027/ Q15836	H M R	IHC ELISA
ESAP11108	NT5E Polyclonal Antibody	P21589	H M R	ELISA WB IHC
EAP0835	NTRK1 Polyclonal Antibody	P04629	H R	WB
ESAP12206	NTRK1 (Phospho-Ser791) Polyclonal Antibody	P04629	H	WB IF
ESAP12897	NTRK1 Polyclonal Antibody	P04629	H M R	ELISA IHC
ENP0285	Phospho-GSK3 $\beta$ (S9) Polyclonal Antibody	P49841	H M R	WB IHC ELISA
ENT2082	GSK3 $\beta$ Polyclonal Antibody	P49841	H M R	WB IHC IP ELISA
ESAP12195	GSK3B (Phospho-Tyr216) Polyclonal Antibody	P49841	H M R	WB IHC IF
EAP3953	NSF Polyclonal Antibody	P46459	H M R	WB IHC
ENP0269	Phospho-Trk B (Y516) Polyclonal Antibody	Q16620	H M R	WB IHC ELISA
ENP0270	Phospho-Trk B (Y706) Polyclonal Antibody	Q16620	H M R	WB IHC IF ELISA
ENT4744	Trk B Polyclonal Antibody	Q16620	H M R	WB IHC IF ELISA
ENP0800	Phospho-Trk C (Y516) Polyclonal Antibody	Q16288	H M R	WB IHC ELISA
ENT5165	Trk C Polyclonal Antibody	Q16288	H	WB ELISA
ESAP14526	NPY Polyclonal Antibody	P01303	H M R	ELISA WB
ESAP11617	NR1D1 Polyclonal Antibody	P20393	H M R	ELISA IHC
ENC068	Cleaved-Notch 2 (A1734) Polyclonal Antibody	Q04721	H M R	WB ELISA
ENC069	Cleaved-Notch 2 (D1733) Polyclonal Antibody	Q04721	H M R	WB IHC ELISA
ESAP16358	NOTCH2 Polyclonal Antibody	Q04721	H M R	ELISA WB IHC
EAP3186	NOTCH4 Polyclonal Antibody	Q99466	H M R	WB
ENC071	Cleaved-Notch 4 (V1432) Polyclonal Antibody	Q99466	H Mk	WB ELISA
ENK5452	Neuropilin Polyclonal Antibody	O14786	H M R	WB ELISA



## Neuroscience

Cat. No.	Product Name	Swissprot	Reactivity	Application
ENT3073	Neuropilin-1 Polyclonal Antibody	O14786	H M R	WB IHC ELISA
EPM12393	Neuropilin 1 Monoclonal Antibody	O14786	H	ELISA WB IHC IF
ESAP16820	KCNJ6 Polyclonal Antibody	P48051	H M R	ELISA IHC
EAP1223	NOTCH3 Polyclonal Antibody	Q9UM47	H M R	WB IHC IF
EAP1261	GNAZ Polyclonal Antibody	P19086	H M R	WB IHC
ENT3074	Neuropilin-2 Polyclonal Antibody	O60462	H M R	WB ELISA
ESAP13698	NRP2 Polyclonal Antibody	O60462	H M R	ELISA IHC
EAP3863	GLUD1 Polyclonal Antibody	P00367	H M R	WB IHC
ESAP16914	KISS1R Polyclonal Antibody	Q969F8	H	ELISA IHC
ENC067	Cleaved-Notch 1 (V1754) Polyclonal Antibody	P46531	H M R	WB IHC ELISA
ESAP13050	NOTCH1 Polyclonal Antibody	P46531	H R	ELISA WB IHC
ENT1908	GIT1 Polyclonal Antibody	Q9Y2X7	H M R	WB IHC ELISA
EAP3103	GNAQ Polyclonal Antibody	P50148	H M	WB
ENT3168	NOS1 Polyclonal Antibody	P29475	H M R	WB IHC IF ELISA
ENP0456	Phospho-GRK 2 (S685) Polyclonal Antibody	P25098	H M R	WB ELISA
ENT2064	GRK 2 Polyclonal Antibody	P25098	H M R	WB IHC ELISA
ENT2068	GRK 3 Polyclonal Antibody	P35626	H M R	WB IHC ELISA
ESAP15532	CLIC1 Polyclonal Antibody	O00299	H M R	ELISA WB IHC
ENT1003	CNPase Polyclonal Antibody	P09543	H M R	WB IHC ELISA
ENT3515	p39 Polyclonal Antibody	Q13319	H	WB IHC ELISA
ESAP15231	DCBLD2 Polyclonal Antibody	Q96PD2	H M R	ELISA IHC
EAP2559	COMT Polyclonal Antibody	P21964	H M R	WB
EAP3305	TRPC6 Polyclonal Antibody	Q9Y210	H M R	WB
ESAP16467	TRPC6 Polyclonal Antibody	Q9Y210	H	ELISA IHC
ENK039	Acetyl-Tubulin $\alpha$ (K40) Polyclonal Antibody	Q71U36	H M R	WB ELISA





# Neuroscience

Cat. No.	Product Name	Swissprot	Reactivity	Application
ENK040	Acetyl-Tubulin $\alpha$ (K352) Polyclonal Antibody	Q71U36	H M R	WB ELISA
EPM12123	acetylated Tubulin (Lys40) Monoclonal Antibody	Q71U36	H M R Dog	ELISA WB IHC IF
ENM0035	$\alpha$ -tubulin Monoclonal Antibody	Q71U36/P68363	H R M	WB IP
ENT4777	Tubulin $\alpha$ Polyclonal Antibody	Q71U36/P68363	H M R	WB IHC IF ELISA
ENK045	Acetyl-Tubulin $\alpha$ (K112) Polyclonal Antibody	Q71U36/P68363/ Q9BQE3	H M R	WB ELISA
ENM0119	$\beta$ I tubulin Monoclonal Antibody	Q9H4B7	Zebrafish	WB
ENP0075	Phospho-CREB-1 (S133) Polyclonal Antibody	P16220	H M R	WB IHC IP ELISA
ENP0856	Phospho-CREB-1 (S142) Polyclonal Antibody	P16220	H M R	WB IHC IF ELISA
ENT1097	CREB-1 Polyclonal Antibody	P16220	H M R	WB IHC ELISA
ENT0981	Clusterin Polyclonal Antibody	P10909	H M R	WB IHC IF ELISA
EPM12227	Clusterin Monoclonal Antibody	P10909	H	ELISA WB IHC
ESAP14331	DUSP14 Polyclonal Antibody	O95147	H M	ELISA IHC
EAP0868	UCHL1 Polyclonal Antibody	P09936	H M R	WB IHC ICC IF
EPM12532	UCHL1 Monoclonal Antibody	P09936	H M Pig	ELISA WB IHC IF
ESAP14954	UBQLN1 Polyclonal Antibody	Q9UMX0	H M R	ELISA WB IHC
EAP4067	UCHL3 Polyclonal Antibody	P15374	H M R	WB IHC
ENT0791	Cdc20 Polyclonal Antibody	Q12834	H M R	WB IHC ELISA
EAP4176	CPLX2 Polyclonal Antibody	Q6PUV4	H M R	WB
ENT0679	Cathepsin B Polyclonal Antibody	P07858	H M R	WB IHC ELISA
ESAP15196	CSNK1D Polyclonal Antibody	P48730	H M R	ELISA WB IHC
EGM0316	Cst3 Polyclonal Antibody	P01034	R	WB IHC
ESAP12448	CST3 Polyclonal Antibody	P01034	H	ELISA WB IHC
ESAP11114	CSNK1E Polyclonal Antibody	P49674	H M	ELISA WB IHC
ENT3856	Presenilin 1 Polyclonal Antibody	P49768	H M R	WB IHC ELISA
EAP3743	CAMK2G Polyclonal Antibody	Q13555	H M R	WB IHC IF



# Neuroscience

Cat. No.	Product Name	Swissprot	Reactivity	Application
ENT0625	CaMKII $\beta/\gamma$ Polyclonal Antibody	Q13555/Q13554	H M R	WB IF ELISA
ESAP12628	GAD1 Polyclonal Antibody	Q99259	H M R	ELISA WB IHC
ENT1830	GAD-65/67 Polyclonal Antibody	Q99259/Q05329	H M	WB IHC IF ELISA
ENM0250	GAP43 Polyclonal Antibody	P17677	H M R	WB
ENT1849	GAP-43 Polyclonal Antibody	P17677	H M R	IHC ELISA
ENK022	Acetyl-Ref-1 (K6) Polyclonal Antibody	P27695	H	WB ELISA
ENK023	Acetyl-Ref-1 (K7) Polyclonal Antibody	P27695	H	WB ELISA
ENT4039	Ref-1 Polyclonal Antibody	P27695	H M R	WB IHC ELISA
ESAP12899	NKX2-1 Polyclonal Antibody	P43699	H M R	ELISA WB
EPM12527	TTF1 Monoclonal Antibody	P43699	H	ELISA WB IHC
ENM0139	$\beta$ -tubulin Monoclonal Antibody	Q13509	H R M Mk Dg Ch Hm Rb	WB IHC IP
ENM0165	$\beta$ III tubulin Monoclonal Antibody	Q13509	H M R	WB
ENM0248	$\beta$ III Tubulin Polyclonal Antibody	Q13509	H M R	WB
ENT4780	Tubulin $\beta$ Polyclonal Antibody	Q13509	M R	WB IHC IF ELISA
ENP0380	Phospho-Cdk5 (Y15) Polyclonal Antibody	Q00535	H M R Mk	WB IHC ELISA
ENT0835	Cdk5 Polyclonal Antibody	Q00535	H M R	WB IHC ELISA
ENT0687	CB1 Polyclonal Antibody	P21554	H M R Mk	WB IHC IF ELISA
EPM12579	CLPP Monoclonal Antibody	Q16740	H	ELISA WB
EAP3289	CNTN2 Polyclonal Antibody	Q02246	H	WB
ESAP12966	DCLK1 Polyclonal Antibody	O15075	H M	ELISA WB
ESAP16283	DCLK1 Polyclonal Antibody	O15075	H M	ELISA IHC
ENT4212	SAPAP1 Polyclonal Antibody	O14490	H M R	WB IHC IF ELISA
ENT3879	PSD-95 Polyclonal Antibody	P78352	H M R	WB ELISA
ESAP16395	DLG4 Polyclonal Antibody	P78352	H M R	ELISA IHC
EAP2020	DLST Polyclonal Antibody	P36957	H M R	WB IHC



## Neuroscience

Cat. No.	Product Name	Swissprot	Reactivity	Application
EAP0519	DTNBP1 Polyclonal Antibody	Q96EV8	H M R	WB IHC IF
ENT3878	PSD-93 Polyclonal Antibody	Q15700	H	WB IHC ELISA
ESAP13790	DLG2 Polyclonal Antibody	Q15700	H	ELISA IHC
ESAP11304	DBH Polyclonal Antibody	P09172	H M	ELISA WB IHC
ENT1406	Doublecortin Polyclonal Antibody	O43602	H M R	WB IHC ELISA
EAP3329	CXCR4 Polyclonal Antibody	P61073	H M R	WB IHC
ENP0917	Phospho-Fusin (S339) Polyclonal Antibody	P61073	H M R Mk	WB IHC IF ELISA
ENT1800	Fusin Polyclonal Antibody	P61073	H M R	WB IF ELISA
ESAP17312	CSPG4 Polyclonal Antibody	Q6UVK1	H M R	ELISA WB IHC
ENP0513	Phospho-CRMP-2 (S522) Polyclonal Antibody	Q16555	H M R	WB ELISA
ENP0814	Phospho-CRMP-2 (T509) Polyclonal Antibody	Q16555	H M R	WB IHC ELISA
ENP0947	Phospho-CRMP-2 (T514) Polyclonal Antibody	Q16555	H M R	WB IHC IF ELISA
ENT1114	CRMP-2 Polyclonal Antibody	Q16555	H M R	WB IHC ELISA
ESAP15759	ACHE Polyclonal Antibody	P22303	H M R	ELISA WB IHC
ENT5248	Integrin $\alpha$ 4 Polyclonal Antibody	P13612	H M R	WB ELISA
ENT3131	NK-1R Polyclonal Antibody	P25103	H M R	WB IF ELISA
ENT0225	Amylin Polyclonal Antibody	P10997	H	WB IHC IF ELISA
ESAP15778	IAPP Polyclonal Antibody	P10997	H M R	ELISA WB IHC
EAP3918	LEP Polyclonal Antibody	P41159	M	WB IHC
ESAP14380	GSR Polyclonal Antibody	P00390	H M R	ELISA WB IHC
ENT1439	Dyskerin Polyclonal Antibody	O60832	H M R	WB IHC IF ELISA
EAP1123	DISC1 Polyclonal Antibody	Q9NRI5	H M R	WB IHC
EAP1544	MECP2 Polyclonal Antibody	P51608	H M R	WB IHC IF
ESAP15496	MECP2 Polyclonal Antibody	P51608	H M R	ELISA WB IHC





**Elabscience®**

---

Email: [techsupport@elabscience.com](mailto:techsupport@elabscience.com)

Website: [www.elabscience.com](http://www.elabscience.com)